

Keystone Fence



SUPPLY CO



***Your One-Stop Shop for Quality
Agricultural Fence Supplies***



Office: (717) 949-8170

Email: sales@keystonefencesupplies.com

Website: www.keystonefencesupplyco.com

PO Box 268 - 280 North Locust Street - Schaefferstown, PA 17088

Table of Contents

Electric Supplies	3-4
Energizers	5-6
Equine Fence	7-8
Equipment	9-16
Gates	17-19
Gate Accessories	20-22
Hardware	23-26
Insulators	27-30
Tapes & Twines	31
Tools	32-36
Wire	37-41
Wood & Posts	42-46
Fence Stain	47-48

Contact Us

Phone:

Office: (717) 949-8170

E-mail:

sales@keystonefencesupplies.com

Internet:

www.keystonefencesupplyco.com

Address:

P.O. Box 268
280 North Locust Street
Schaefferstown, PA 17088

GPS Coordinates

N 40 18.293 W076 18.247

Hours:

Monday - Friday
7am - 5pm



Follow us for the latest updates!



About Us

KEYSTONE FENCE SUPPLY CO is a one-stop shop for all your agricultural, equine, and game fencing supplies & accessories. We began as a local contractor-based fence supply company in March of 1993. Since that time we have expanded to cover all levels of distribution.

Our goal is to provide customers with the highest quality products and customer service. We are committed to providing an efficient, friendly, and high-quality customer experience.

We strive to provide a high standard of employment for our employees while viewing and practicing all business with Christian principles. We are committed to our employees, and consider their dedication and work ethic to be one of our greatest assets.



We want to provide you with the highest quality agricultural fence posts available! We are able to control quality by manufacturing our own fence posts, letting them air season properly, and then pressure treating them at our own wood preserving facility.

Our Wood Preserving Plant has a strong commitment to its people, to the environment, and to the community in which we operate. We treat in accordance with AWPA standards and have high standards for quality control.

Our manufacturing facility processes 10+ million board feet of lumber a year, and is now powered by solar energy. We are expanding our system to include our office and warehouse buildings.

Innovation never stops, and our solar energy system is just one way we are working to create a better future for tomorrow!

We will continue to bring innovative products to the fencing industry to better serve our customers!



FenceGard Fault Finder

The FenceGard Fault Finder is a combined voltmeter and current meter designed to quickly locate electric fence faults. A large LCD panel displays fence voltage or current. The cordless design eliminates ground probes, and is compatible with any fence energizer.

1 year warranty.

Product Code: FGFF



Flood Gate Controller

The Flood Gate Controller automatically limits the amount of power drawn from a shorted wire due to flood or vegetation, allowing the rest of the fence to remain electrified.

Product Code: PA38



Parmak Fence Tester

The Parmak Fence Tester is used to check voltage on an electric fence. Six display lights glow in sequence to show approximate voltage. A fence stud on the device allows you to simply touch the fence wire without the use of any clips or wires. Made in the USA.

Product Code: 817



Power Surge Protector

The Power Surge Protector helps protect your fence energizer from electrical overloads that can be caused by lightning strikes or power surges. Simply plug the protector into a grounded outlet and plug the charger into the protector.

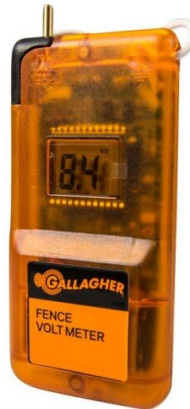
Product Code: SP7817



Gallagher Digital Volt Meter

The Gallagher Digital Volt Meter is a compact handheld device that measures the voltage of your fence. A fence stud on the device allows you to simply touch the fence wire without the use of any clips or wires. The digital display clearly indicates the voltage level.

Product Code: G503014



Double Throw Cut-Out Switch

Double Throw Cut-Out switches are used to turn electric on and off along the fence line. Double Throw Cut-Out switches can also be used to direct electricity to the fence line of choice or change the polarity of selected wires. These switches are an easy solution to disconnect electricity to unused pastures in order to increase voltage.

Product Code: 2199



Gallagher Live Fence Indicator

The Gallagher Live Fence Indicator uses power from your fence to flash an LED indicator light to easily identify if your fence is working properly. No batteries are required. 1 year warranty.

Product Code: G51100



FenceGard Heavy Duty Cut-Out Switch

Cut-Out switches are used to turn electric on and off along the fence line. Cut-Out switches can also be used to disconnect electricity from unused pastures in order to increase voltage. Manufactured with stainless steel components.

Product Code: 245293





FenceGard Electric Tape Connector

Electric Tape Connectors can be used to jump electrical power from one strand of electric tape to another. This product can also be used to link electric tape to the fence energizer.

Product Code: 30158 (10 per case)



Electric Fence Sign

These signs are printed on both sides of durable, UV resistant plastic. Comes with pre-drilled holes to mount on wooden fence posts, or built in clips to hang on wire.

Product Code: 916 (10 per pack)



Lightning Choke and Diverter Combo

This product combines the two essential components of a lightning diverter. The choke coil slows the surge of electrical energy by inductive forces created in the coil. The energy searching for the ground jumps the gap in the arrestor and finds the fastest route to the ground. The arrestor on this product features an adjustable gap for maximum protection.

Product Code: 610 (10 per case)



Underground Lead Out Wire

The Underground Lead Out Wire is a 12.5 gauge, class 3 galvanized wire that has a UV resistant polyethylene coating. This product is designed to work with fence energizers.

50' - JWEL0-3005

100' - JWEL0-3010

250' - JWEL0-3025

500' - JWEL0-3050



Heavy Duty Ground Rod Clamp

The Heavy Duty Ground Rod Clamp fits all ground rods up to 1 1/4" diameter.

Product Code: 566 (25 per case)

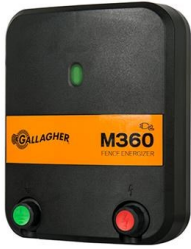


KFS Ground Rods

These 5/8" diameter KFS Ground Rods are hot dipped galvanized.

6' Long - 565 (10 per pack)

Gallagher Energizers



Features:

- 19 mile range
- Rugged design
- 3 year warranty

Gallagher M360 Energizer

The Gallagher M360 Energizer is capable of charging up to 19 miles of multi wire fence with a stored energy of 3.6 joules. This fence energizer plugs into a 110V outlet and can be mounted to a wall or post. Reliable animal control is assured with integrated lightning protection. Ideal for small to medium pastures.

Product Code: M360



Features:

- 23 mile range
- Rugged design
- 3 year warranty

Gallagher M560 Energizer

The Gallagher M560 Energizer is capable of charging up to 23 miles of multi wire fence with a stored energy of 5.6 joules. This fence energizer plugs into a 110V outlet and can be mounted to a wall or post. Reliable animal control is assured with integrated lightning protection. Ideal for small to medium pastures.

Product Code: M560



Features:

- 36 mile range
- Voltage meter
- 3 year warranty

Gallagher M1100 Energizer

The Gallagher M1100 Energizer is capable of charging up to 36 miles of multi wire fence with a stored energy of 11 joules. This fence energizer plugs into a 110V outlet and can be mounted to a wall or post. Reliable animal control is assured with integrated lightning protection. Ideal for medium to large pastures.

Product Code: M1100



Features:

- 45 mile range
- Battery meter
- 3 year warranty

Gallagher S200 Solar Energizer

The Gallagher S200 Solar Energizer features state of the art solar panel technology with superior charging power and 2 Joules of stored energy. This energizer will work for 1 week without sunlight, and can be mounted 360 degrees on a t-post for correct orientation. 12 Volt rechargeable battery included.

Product Code: S200



Features:

- 75 mile range
- Battery meter
- 2 year warranty

FenceGard FG500D Dual Energizer

The FenceGard FG500D Energizer is capable of charging up to 75 miles of wire fence with an output of 5 joules. This fence energizer plugs into a 110V power supply, or can be hooked to a 12V battery. Ultra low impedance performance enables the fence energizer to deliver an effective shock through the most challenging conditions.

Product Code: FG500D



Features:

- 100 mile range
- Indicator light
- 2 year warranty

FenceGard FG600 Energizer

The FenceGard FG600 Energizer is capable of charging up to 100 miles of wire fence with an output of 6 joules. This fence energizer plugs into a 110V power supply. Ultra low impedance performance enables the fence energizer to deliver an effective shock through the most challenging conditions.

Product Code: FG600



Features:

- 150 mile range
- Indicator light
- 2 year warranty

FenceGard FG900 Energizer

The FenceGard FG900 Energizer is capable of charging up to 150 miles of wire fence with an output of 9 joules. This fence energizer plugs into a 110V power supply. Ultra low impedance performance enables the fence energizer to deliver an effective shock through the most challenging conditions.

Product Code: FG900



Features:

- 200 mile range
- Indicator light
- 2 year warranty

FenceGard FG1200 Energizer

The FenceGard FG1200 Energizer is capable of charging up to 200 miles of wire fence with an output of 12 joules. This fence energizer plugs into a 110V power supply. Ultra low impedance performance enables the fence energizer to deliver an effective shock through the most challenging conditions.

Product Code: FG1200



Features:

- 30 mile range
- Indicator light
- 2 year warranty

FenceGard FG50S Solar Energizer

The FenceGard FG50S Solar Energizer is capable of charging up to 30 miles of wire fence with an output of .5 joules. This fence energizer uses a durable solar panel to charge the built in battery. Ultra low impedance performance enables the fence energizer to deliver an effective shock through the most challenging conditions.

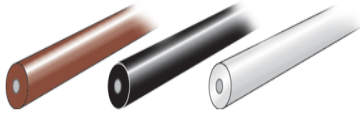
Product Code: FG50S

FenceGard FG50S Replacement Battery Product Code: FG50SRB

Equine Fence

Horsecote

Horsecote is a 12.5 gauge class 3 galvanized high tensile wire that is wrapped in a horse friendly, UV resistant polymer coating. Approximate 5/16" diameter. Made in the USA. 30 Year Warranty.



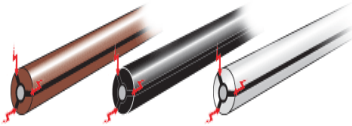
White - JWHCWNB-3213 (1320' per roll/20 rolls per skid)

Black - JWHCBKNB-3213 (1320' per roll/20 rolls per skid)

Brown - JWHCBRNB-3213 (1320' per roll/20 rolls per skid)

Hotcote

Hotcote is a 12.5 gauge class 3 galvanized high tensile wire that is wrapped in a horse friendly, UV resistant polymer coating. Approximate 5/16" diameter. Similar to ordinary high tensile electric fence wire, Hotcote can deliver electric shock. Made in the USA. 20 Year Warranty.



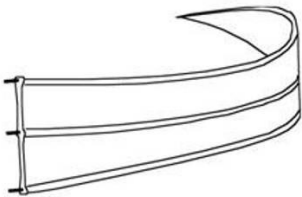
White - JWLCW-3132 (1320' per roll/20 rolls per skid)

Black - JWLCBK-3132 (1320' per roll/20 rolls per skid)

Brown - JWLCBR-3132 (1320' per roll/20 rolls per skid)

Horserail

Horserail is a 5.25" wide polyethylene rail that is bonded with 12.5 gauge class 3 galvanized high tensile wire. The flexibility, smoothness, and strength of Horserail helps protect the horse and rider from injuries caused by conventional railing. Made in the USA. 30 Year Warranty.



White - JWHRW-536 (660' per roll/10 rolls per skid)

Black - JWHRBK-536 (660' per roll/10 rolls per skid)

Brown - JWHRBR-536 (660' per roll/10 rolls per skid)

5.25" Two Piece Spooler

Two Piece Spoolers properly tension Horserail fence without stripping, crimping or notching. These spoolers can be installed after initial rail assembly.

All spoolers are hot dipped galvanized and powder coated. Made in the USA.



White - JWSPW-25 (20 per box)

Black - JWSPBK-25 (20 per box)

Brown - JWSPBR-25 (20 per box)



5.25" Horserail Bracket

Horserail Brackets are used to attach Horserail to fence posts along the fence line. All brackets are hot dipped galvanized and powder coated. Made in the USA.

White - JWSHW-5 (200 per box)

Black - JWSHBK-5 (200 per box)

Brown - JWSHBR-5 (200 per box)



5.25" Inside Corner Bracket

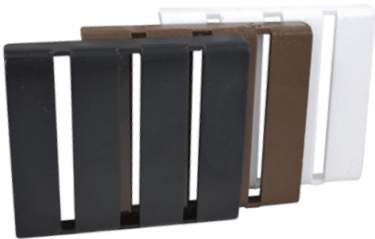
Inside Corner Brackets can handle up to a 90 degree directional change with minimal friction to the Horserail. This allows the Horserail to be placed on the inside of a corner post.

All brackets are hot dipped galvanized and powder coated. Made in the USA.

White - JWB90W-5 (100 per box)

Black - JWB90BK-5 (100 per box)

Brown - JWB90BR-5 (100 per box)



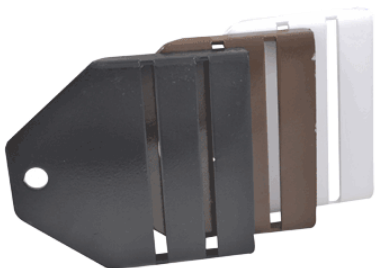
5.25" Splice Buckle

Splice Buckles are used to join two sections of Horserail together without exposed wires or connectors. All buckles are hot dipped galvanized and powder coated. Made in the USA.

White - JWJBW-5 (25 per box)

Black - JWJBBK-5 (25 per box)

Brown - JWJBBR-5 (25 per box)



5.25" Pre-Bent End Buckle

The End Buckle is used to attach Horserail to end posts.

All buckles are hot dipped galvanized and powder coated. Made in the USA.

White - JWABW-545 (25 per box)

Black - JWABBK-545 (25 per box)

Brown - JWABBR-545 (25 per box)



5.25" End Tightener

The 5.25" End Tightener allows one person to attach and tension Horserail to end posts.

Hot dipped galvanized and powder coated.

White - ET5W (12 per box)

Black - ET5BL (12 per box)

Brown - ET5BR (12 per box)

Equipment Accessories



Dirt Auger

The Dirt Auger features a replaceable hardened fishtail pilot.

4 1/2" Dirt Auger - AUG4DIR

5 1/2" Dirt Auger - AUG6DIR



Bullet Tooth Rock Auger

The Bullet Tooth Rock Auger features replaceable bullet style carbide teeth.

4 1/2" Bullet Tooth Rock Auger - AUG4ROC

5 1/2" Bullet Tooth Rock Auger - AUG6ROC

Fishtail Pilot

Replaceable hardened Fishtail Pilot for dirt augers.

Product Code: 112016



Dirt Tooth

Replaceable Dirt Tooth for 5 1/2" Dirt Auger.

Product Code: 112251



6" Rock Bullet Drilling Head

Replacement drilling head for 5 1/2" Bullet Tooth Rock Augers.

Product Code: 6RDH



Carbide Bullet Tooth Pocket

Replacement Carbide Bullet Tooth Pocket for rock auger.

Product Code: 112007



Carbide Bullet Tooth

Replacement Bullet Tooth for 4 1/2" and 5 1/2" rock augers.

Product Code: ROCTEE



Bullet Tooth Puller

The Bullet Tooth Puller is used to remove carbide bullet teeth from an auger.

Product Code: BUTOPUL



Wire Dispenser & Post Driver Parts

Wire Dispenser

- 6' Wire Stretcher Clamp Bar **Product Code: WSC6**
- 8' Wire Stretcher Clamp Bar **Product Code: WSC8**
- Wire Dispenser Valve Handle **Product Code: WDH**
- 2 Bolt Style Handle Assembly **Product Code: WDHHA**
- 4 Bolt Style Handle Assembly **Product Code: WDHHA4**

Montana Post Driver

- Rock Spike **Product Code: MT1000ESPIKE**
- 8" Flat Head **Product Code: MT1000EFT**
- Chisel Paste Grease **Product Code: MTGREASE**

Keystone Post Driver

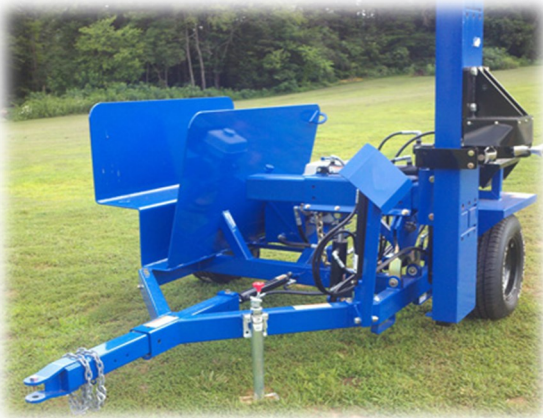
- Keystone Driver Spring (Red Color) **Product Code: 20-02407**
- Keystone Driver Spring Rod **Product Code: SPRINGROD**
- 2.75" Keystone Driver Valve Handle **Product Code: POUH3**
- 4.75" Keystone Driver Valve Handle **Product Code: POUH2**
- 6.25" Keystone Driver Valve Handle **Product Code: POUH1**
- Keystone Driver Handle Knob **Product Code: POUK**
- KP55 Handle Assembly **Product Code: BLB70-801036**
- Heco Gearbox Seal Kit **Product Code: HGSK16U**
- Bottom Mount Cylinder **Product Code: POUCYL**
- Top Mount Cylinder **Product Code: POUCYL1**
- Cylinder Seal Kit **Product Code: POUCYLSK**

RENTAL UNITS FOR YOUR FENCING PROJECT!



Extreme Driver Next Generation Trailer Model

Trailer Models offer a wide stance, post carrier, and low center of gravity for balance and stability. A motor driven self contained hydraulic system makes driving posts hassle free. This driver is capable of driving posts up to 10' in length. **Call for day/weekly rental pricing.**



Extreme Driver Trailer Model

Trailer Models offer a wide stance, post carrier, and low center of gravity for balance and stability. A motor driven self contained hydraulic system makes driving posts hassle free. This driver is capable of driving posts up to 14' in length. **Call for day/weekly rental pricing.**



Montana 750R Skid Steer Driver

Since 2007, Montana Post Driver has been revolutionizing the fencing industry. Today, farmers pound their posts, and fencers grow their businesses with Montana Post Driver. **Call for day/weekly rental pricing.**

Self Loading Wire Dispenser

The Self Loading Wire Dispenser is a heavy duty skid steer/3-point hook up mount unit that is built to handle everyday contractor use. This wire dispenser is capable of dispensing and stretching all types of woven wire up to 8ft high. **Call for day/weekly rental pricing.**



SELF LOADING WIRE DISPENSER



The Self Loading Wire Dispenser is a heavy duty skid steer/3-point hook up mount unit that is built to handle everyday contractor use. This wire dispenser is capable of dispensing and stretching all types of woven wire up to 8ft high. Removable clamp bars allow you to move machine away from fence line after tensioning and terminating wire. Side Shift Hydraulics allow the woven wire to clear machine tracks and dispense while driving forward with upgrade option. Remote Control Hydraulics upgrade allows operation inside of enclosed cabs with doors. Made in the USA.



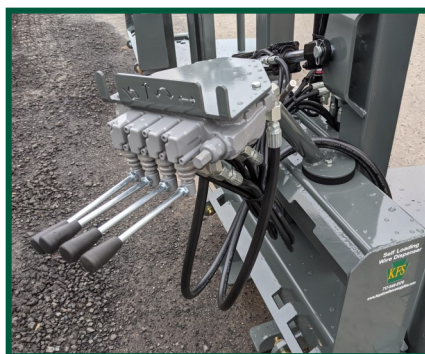
3 Available Models:

***WIRSTR3E:** Economy Model. No Side Shift or Tilt Swivel. 8' Clamp Bars Sold Separately.*

***WIRSTR1:** Non Side Shift Model. Tilt Swivel.*

***WIRSTR2RC:** Side Shift Model with Tilt Swivel and Remote Control Hydraulics.*

- **Capable of dispensing and stretching wire up to 8 feet high**
- **Dispense from either side of the stretcher**
- **Hydraulic side tilt**
- **Hydraulic side shift (optional)**
- **Remote control hydraulics (optional)**
- **Hydraulic clamps with UHMW-PE inserts to protect wire**
- **3-point hook-up and skid steer mount**



Standard Valve Bank Controls
Adjustable controls for machines with no doors on cab.



Remote Control Hydraulic Upgrade
Scanreco electronics powered by DEWALT or MILWAUKEE battery.

Visit our YouTube channel
for more information!

MONTANA DRIVER



NITROGEN HYDRAULIC STYLE

Since 2007, Montana Post Driver has been revolutionizing the fencing industry. Today farmers pound their posts, and fencers grow their businesses with Montana Post Driver. Add on tilt swivel, excavator mounts, and auger systems make this post driver highly customizable for any job! Low Maintenance design with only one grease fitting and two moving parts.

- Tilt Swivel Available
- Auger System Available
- Extension Plates Available
- Excavator Mounts Available
- Concrete Breakers Available

Maximum Post Size: 8" Diameter
Lift Requirement: 50% 2,500lb
Impacts Per Minute: 400-800
Hydraulic Oil Flow: 13-24 GPM
Minimum Pressure: 2,200 PSI
Weight: 2,000lbs

Montana 1000E Specifications

KEYSTONE DRIVER



BEAM DRIVER STYLE

The Keystone Driver is a heavy duty skid steer mount unit that is built to handle everyday contractor use. Adjustable driving height allows this post driver to accommodate a variety of posts and lengths. This Keystone Driver features a stationary guided down pressure drill with a hard surface coated auger. When proven hard hitting reliability is required, choose the KP55!

- **Heavy duty commercial unit**
- **Side tilt for uneven terrain**
- **Contractor proven quality**
- **Guided down pressure drill**
- **Hard surface coated auger**

Adjustable Driving Height: 4ft – 6ft – 8ft

Maximum Post Size: 8" x 14'

Impact at Full Stroke: 131,000lbs

Tilt Adjustment: 20 degrees side/side

Keystone Driver with Down Pressure Auger: KP55

X SERIES
CONTRACTOR GRADE DRIVERS

TITAN
POST DRIVERS

CHOOSE POWER AND VERSATILITY

PROFESSIONAL QUALITY YOU CAN TRUST

The PGD3200X was designed with the professional in mind. Rugged power and versatility make this driver the ideal tool for tackling any project.

- Powerful Honda GX35 1.3hp 4 Stroke Engine
- Driver ships in rugged custom poly carry case with tool kit, extra grease, oil, and a 2.5" reducer sleeve
- Customize with handle kits that provide added throttle assemblies and grips for improved comfort and control. Additional sleeves and adapters are available to efficiently drive a variety of posts.



THE FULL LINE

To check out our full line of X-Series kits and other Titan accessories, visit us online at titanpostdrivers.com

Honda Engine Contractor X Series: PGD3200X
15" Extension Handle with Throttle: PGDSHKX
30" Extension Handle with Throttle: PGDEHKX





POWERFUL, LIGHTWEIGHT, & COMPACT

Perfect for T-Posts, Pipes, Rods, and Stakes

- Lightweight and compact weighing 32 pounds
- Powered by Honda GX35 or 140FA 4-stroke engine
- Comes with 1", 1.75", and 2.5" steel barrel sleeves and barrel cap
- Delivers from 1,200 to 1,600 bpm
- Perfect for farmers, ranchers, and residential users



THE FULL LINE

To check out our full line post drivers, accessory kits and other Titan accessories, visit us online at titanpostdrivers.com

Honda Engine Farm & Home Series: PGD1032H
Titan Grease: PGDLUBE



Black Heavy Duty Deer & Game Gate Sizes:

4' - 84G44
 6' - 86G44
 8' - 88G44
 10' - 810G44
 12' - 812G44
 16' - 816G44

All gates are constructed 4" short of stated width to accommodate mounting hardware.

Heavy Duty Deer & Game Gate

The Heavy Duty Deer & Game Gate is coated with a zinc rich primer and has a black powder coat finish. Includes heavy duty hinges, two $\frac{3}{4}$ " bolt hooks, and a locking spring loaded latch.

4x4 wire fill. 1.9" 14 gauge tubing. 98" Height. Made in the USA.



Black Deer & Game Gate (with Man Door) Size:

12' - 812G44MD

All gates are constructed 4" short of stated width to accommodate mounting hardware.

Deer & Game Gate with Man Door

The Heavy Duty Deer & Game Gate features a 3' x 7.5' man door. This gate is coated with a zinc rich primer and has a black powder coat finish. Includes heavy duty hinges, two $\frac{3}{4}$ " bolt hooks, and a locking spring loaded latch.

4x4 wire fill. 1.9" 14 gauge tubing. 98" Height. Made in the USA.



Black 2x4 Wire Filled Gate Sizes:

- 4' - 44G24**
- 6' - 46G24**
- 8' - 48G24**
- 10' - 410G24**
- 12' - 412G24**

All gates are constructed 4" short of stated width to accommodate mounting hardware.

Heavy Duty Wire Filled Gate

The Heavy Duty Wire Filled Gate is coated with a zinc rich primer and has a black powder coat finish. Includes heavy duty hinges, two ¾" bolt hooks, and a locking spring loaded latch. 2x4 wire fill. 1.9" 14 gauge tubing. 50" Height. Made in the USA.



Hot Dipped Galvanized Tube Gate Sizes:

- 4' - HGS4**
- 6' - HGS6**
- 8' - HGS8**
- 10' - HGS10**
- 12' - HGS12**
- 14' - HGS14**
- 16' - HGS16**

All Hot Dipped Galvanized Tube Gates are constructed 6" short of stated width to accommodate mounting hardware.

Hot Dipped Galvanized Tube Gate

The Hot Dipped Galvanized Tube Gate is a heavy duty, 1.75" 18 gauge tube gate that includes heavy duty hinges, two ¾" bolt hooks, and a chain style latch. 50" Height. Made in the USA.



Heavy Duty Split Rail Gate

Heavy Duty Split Rail Gates are constructed with heavy duty treated rails. Includes powder coated hinges and a locking spring loaded latch. Made in the USA.

2 Rail Height: 36" to top rail. 3 Rail Height: 48" to top rail. 4 Rail Height: 60" to top rail.

Split Rail Gate Sizes:

2 Rail

3' - G2R3

4' - G2R4

5' - G2R5

6' - G2R6

3 Rail

3' - G3R3

4' - G3R4

5' - G3R5

6' - G3R6

8' - G3R8

10' - G3R10

4 Rail

4' - G4R4

5' - G4R5

6' - G4R6

8' - G4R8

10' - G4R10

All gates are constructed 4" short of stated width to accommodate mounting hardware.



Heavy Duty Board Gate

Heavy Duty Board Gates are constructed with 1" X 6" SYP treated boards and hot dipped galvanized bolts. Includes powder coated strap hinges and a locking spring loaded latch. Made in the USA.

3 Board Height: 50" to top board. 4 Board Height: 50" to top board.

Board Gate Sizes:

3 Board

4' - G3B4

5' - G3B5

6' - G3B6

8' - G3B8

10' - G3B10

4 Board

4' - G4B4

5' - G4B5

6' - G4B6

8' - G4B8

10' - G4B10

All gates are constructed 4" short of stated width to accommodate mounting hardware.



Split Rail Gate Hinge

This gate hinge is designed for split rail gates and can also be used on other types of wood gates. Will accept a 3/4" pin. Powder coated black for durability. Made in the USA.

Product Code: 611



Strap Gate Hinge

This 16" bolt on gate hinge is designed for board gates and accepts a 3/4" pin. Requires four 3/8" diameter bolts. Powder coated black for durability. Made in the USA.

Product Code: 604



Bolt Gate Hinge

Nuts and washers included.

3/4" Diameter Hot Dipped Galvanized 12" long - 605

5/8" Diameter Hot Dipped Galvanized 13" long - 608



Screw Gate Hinge

This gate hinge is galvanized and is 6" long. Made in the USA.

3/4" Diameter - 606

5/8" Diameter - 612



FenceGard 3 Hole Gate Activator Plate

The 3 Hole Gate Activator Plate attaches to a pinlock insulator and has room to connect three gate handles, or two gate handles if a split bolt is added.

Product Code: 109145 (25 per bag/20 bags per case)



FenceGard 3 Hole Gate Activator Plate with Insulator

The 3 Hole Gate Activator Plate with Insulator includes a split bolt to attach an electric wire.

This product has room to connect two gate handles, or three gate handles if the split bolt is removed.

Product Code: 145915 (15 per bag)



Heavy Duty Cane Bolt

This Cane Bolt features a 3/4" diameter drop rod that measures 34" in length. Drop rod and mounting brackets are designed for wood gates and are powder coated black for durability. Made in the USA.

Product Code: 618



Removable Gate Center Pole

The Removable Gate Center Pole allows for double gates to be individually latched. The center pole is also removable to provide clear access. Adjustable design fits gates 4'-5'.

Powder coated for durability. Made in the USA.

4'-5' Black - 619BL

4'-5' Bronze - 619BR

Hot Dipped Galvanized Gate Hardware Kit

Includes heavy duty hinges for 1.75" tube gates, two 3/4" bolt hooks, and a chain style latch.

Product Code: HGSHK



FenceGard Spring Gate

The Spring Gate features a polycarbonate compression handle with galvanized or stainless spring. Includes pinlock insulator and 3 hole gate activator plate with split bolt for easy electrical hookup.

16' Galvanized Spring Gate - 782058 (20 per case)

24' Galvanized Spring Gate - 157024 (20 per case)

16' Stainless Spring Gate - 782058S (20 per case)

24' Stainless Spring Gate - 157024S (20 per case)



Gallagher Electric Bungee Gate

The Gallagher Electric Bungee Gate features a highly visible shock cord and an insulated handle. The electrified bungee cord can stretch from 11.5' to 23'. Mounting hardware included.

Product Code: G640504 (10 per case)



FenceGard Spring Gate Replacement Spring

16' Galvanized Replacement Spring Gate Spring - 145911 (30 per case)

24' Galvanized Replacement Spring Gate Spring - 145912 (30 per case)

16' Stainless Replacement Spring Gate Spring - 145911S (30 per case)

24' Stainless Replacement Spring Gate Spring - 145912S (30 per case)



FenceGard Black Gate Handle

These compression gate handles are made from a durable black plastic material.

Product Code: 717512 (20 per case)



FenceGard Polycarbonate Gate Handle

These compression gate handles are made from a durable polycarbonate material.

Product Code: 717513 (20 per case)



FenceGard Heavy Duty Gate Handle

The Heavy Duty Gate Handle has an insulated rubber handle and features a durable internal spring.

Product Code: 717525 (25 per case)



Gallagher Gate Hook and Chain

The Gallagher Gate Hook and Chain features a galvanized latch with 14" chain and two oversized staples for a secure hold. This latch is designed for one handed use.

Product Code: 571

Double Gate Bar Latch

The Double Gate Bar Latch is designed to securely latch and keep double gates in line with the fence. This latch enables the gate to be opened from either side, and will fit all Board Gates or Deer & Game and Wire Filled Gates sold by KFS. Powder coated for durability. Made in the USA.

Metal Gate Double Gate Bar Latch Black - 700BL

Metal Gate Double Gate Bar Latch Bronze - 700

Board Gate Double Gate Bar Latch Black - 600



Spring Loaded Gate Latch

This heavy duty gate latch features a 3/4" pin with stainless steel spring. Powder coated black for durability. Made in the USA.

Split Rail Gate Latch - 607

Board Gate Latch - 615



Co-Line Slam Latch

The Co-Line Slam Latch allows for easy, one handed operation. This slam latch can be padlocked, and is galvanized for durability. Made in the USA.

One-Way Slam Latch - OWR1582 (6 per case)

Two-Way Slam Latch - R1582L (8 per case)



KFS Two-Way Slam Latch

The KFS Two-Way Slam Latch allows for one handed operation and enables the gate to be opened either direction. This slam latch can be padlocked, and is powder coated for durability. Only compatible with the Expanded Metal, Deer & Game, and Wire Filled Gates sold by Keystone Fence Supplies.

KFS Two-Way Slam Latch Black - R1582LBL (6 per case)

KFS Two-Way Slam Latch Bronze - R1582LBR (6 per case)



Sure Stop Gate Anchor

The Sure Stop Gate Anchor features a 3/4" diameter drop rod that measures 17" in length. Drop rod and mounting brackets are galvanized for durability. Made in the USA.

Product Code: SS-1 (6 per case)



Gate Wheel Assembly

The Gate Wheel Assembly is designed to make opening and closing gates easier.

Product Code: GW-1 (4 per case)





Kiwi In-Line Strainer

The Kiwi original in-line strainer is hot dipped galvanized and has a spring to hold the latch flipper tight against the cog spool. Made in the USA.

Product Code: 401 (50 per case/3200 per skid)



Premium In-Line Strainer

Our Premium In-Line Strainers are hot dipped galvanized and feature an aluminum cog wheel. A stainless steel spring holds a flap against the cog wheel allowing for safe wire tensioning. Made in the USA.

Product Code: 400 (50 per case/3200 per skid)



Strainer with Quick-End

Allows fence wire to be attached to the strainer without the use of crimp sleeves or other connectors. For use with 12.5ga wire.

Product Code: 402 (50 per case)



FenceGard Donalds Type Strainer

This Donalds Type Strainer is made of quality materials and is designed with an aluminum cog, galvanized strap and spring. This strainer can be used with various types of high tensile wire and can be tightened using a wrench.

Product Code: 109322 (50 per case)



FenceGard In-Line Daisy Wheel Strainer

The In-Line Daisy Wheel Strainer is produced with aluminum alloy materials and is designed with a galvanized steel clip. This durable strainer is made for in-line tensioning of the fence.

Product Code: 103500 (50 per case)



Mini Spooler

The Mini Spooler is used to tension end braces and is hot dipped galvanized for durability.

Product Code: JWMSP-1 (40 per case)

FenceGard 5" HDG Brace Pins

These Brace Pins are hot dipped galvanized.

5/16" Diameter - Product Code: 109136 (100 per case)



3/8" Diameter - Product Code: 109140 (100 per case)



FenceGard 10" HDG Brace Pins

These Brace Pins are hot dipped galvanized.

5/16" Diameter - Product Code: 109137 (100 per case)



3/8" Diameter - Product Code: 109135 (100 per case)





2" Double Barbed Staples 1/2" Wide

These 2" Double Barbed Staples are 1/2" wide and are class three galvanized. This 1/2" wide staple is ideal for coated wire or hotcote tube insulators. Double barbs provide stronger holding power when compared to plain staples. Made in the USA.

1lb loose - 391 (sold loose per lb)

40lb Bucket - HB2W



1 1/4" Barbed Staples

Our 1 1/4" Barbed Staples are Bezinol coated and have a life expectancy superior to those of class three galvanized staples. Barbs provide stronger holding power when compared to plain staples. Approx. 67 staples per lb. Made in the USA.

8lb Bucket - 658096 (6 per case)

50lb Bucket - 187255 (36 per skid)



1 1/2" Double Barbed Staples

Our 1 1/2" Double Barbed Staples are Bezinol coated and have a life expectancy superior to those of class three galvanized staples. Double barbs provide stronger holding power when compared to plain staples. Approx. 56 staples per lb. Made in the USA.

8lb Bucket - 658107 (6 per case)

50lb Bucket - 147613 (36 per skid)



1 3/4" Double Barbed Staples

Our 1 3/4" Double Barbed Staples are Bezinol coated and have a life expectancy superior to those of class three galvanized staples. Double barbs provide stronger holding power when compared to plain staples. Approx. 50 staples per lb. Made in the USA.

8lb Bucket - 658132 (6 per case)

50lb Bucket - 187260 (36 per skid)



2" Double Barbed Staples

Our 2" Double Barbed Staples are Bezinol coated and have a life expectancy superior to those of class three galvanized staples. Double barbs provide stronger holding power when compared to plain staples. Approx. 42 staples per lb. Made in the USA.

8lb Bucket - 658014 (6 per case)

50lb Bucket - 162837 (36 per skid)



DEWALT 9GA ZA Coated Staples

The DEWALT 9 GA Fencing Staples feature divergent point tips, single barb legs paired with an adhesive glue, and a galvanized zinc-aluminum coating to handle a wide variety of fencing applications. 960 staples per box.

1.75" Box - DFS9175B1G



Grip-Rite Ring Shank Nail

The Grip-Rite Ring Shank Nails are a heavy duty option for building board fence. 30° RH PAPER 3-1/4" .131 with Outdoor Rated Galvanization.

2,000 Ring Shank Nails Per Box. Compatible with Milwaukee M18 30 Degree Framing Nailers.

Product Code: GSP12ZRHG

NICOPRESS Crimp Sleeves

These crimp sleeves are longer length, gritted for superior hold, and zinc coated for durability. Made in the USA.



FW1-2 — NICOPRESS 1-2 Crimp Sleeve (100 per bottle/50 bottles per case)

Designed to join 14 or 16 gauge wire sizes.

FW2-3S — NICOPRESS 2-3 Short Crimp Sleeve (100 per bottle/50 bottles per case)

Designed to join 12.5 gauge wire sizes.

FW2-3L — NICOPRESS 2-3 Long Crimp Sleeve (100 per bottle/50 bottles per case)

Designed to join 12.5 gauge wire sizes.

FW3-4 — NICOPRESS 3-4 Crimp Sleeve (50 per bottle/48 bottles per case)

Designed to join 10-11 gauge smooth wire or 14-15.5 gauge barbed wire.

FW4-5 — NICOPRESS 4-5 Crimp Sleeve (50 per bottle/48 bottles per case)

Designed to join 8-9 gauge smooth wire or 12.5 gauge barbed wire.



Small Gripple - 288544

Small Gripples are for use with 13 to 17 gauge wire.

These Gripples have a 660lb max load.

(10 per bag/10 bags per case)

Medium Gripple - 288545

Medium Gripples are for use with 10 to 14 gauge wire or 15.5 gauge barbed wire.

These Gripples have a 880lb max load.

(10 per bag/10 bags per case)

Medium Gripple Bulk Box - 288555

(200 per jar)

Large Gripple - 288436

Large Gripples are for use with 7.5 to 10 gauge wire or 12.5 gauge barbed wire.

These Gripples have a 1320lb max load.

(10 per bag/10 bags per case)



Gripple BeFAST Brace Kit

The Gripple BeFAST Brace Kit is a complete bracing system for any type of H-brace. This type of brace kit is safer for equine than other types of braces because it prevents an open loop at the bottom of the brace. Kit includes: 16.5ft zinc aluminum coated steel cable and 1 large Gripple.

288596 - (1 per pack/10 packs per case)

288591 - Bulk Kit (40 per box)



Gripple T-Clip

Easily tie off wire at the beginning or end of wire fence.

Product Code: 288463 (10 per pack/10 packs per case)

Product Code: 288557 (150 per jar)



Electric Fence Taps

Electric Fence Taps are ideal for making permanent electrical connections on 12.5 and 14 gauge wire. Made in the USA.

NICOPRESS Fence Tap Product Code: FWT3-4 (100 per bottle/50 bottles per case)



FenceGard Split Bolt/Line Tap

Die cast zinc split bolt and washer with galvanized steel nut provide trouble-free connections. Use to connect hook-up or grounding wire to fence. Not a splice.

Product Code: 104005 (10 per pack/10 packs per case)



T-Post Clip

These galvanized steel clips are used to attach wire to a metal t-post.

Product Code: 106 (25 per bag)



Bekaert 2 3/8" Pipe Clips

Bezinal Coated 11 gauge Pipe Clips for attaching wire to 2 3/8" Pipe.

Product Code: 658867 (400 per bucket)



FenceGard Tension Spring

The Tension Spring is a heavy-duty spring that is designed to absorb shocks and maintain wire tension. Hot dipped galvanized for durability.

Product Code: 109155 (20 per case)

1/2" x 4" HDG Lag Screw

1/2" x 4" Hot Dipped Galvanized Lag Screw.

Product Code: LS124 (125 per box)



FenceGard Wire Link

The Wire Link easily splices wire without the use of tools. Simply insert the wire into each end for a secure hold. For use with 12-13 gauge wire.

Product Code: 5059 (500 per case)

Product Code: 5059-10 (10 per pack/10 packs per case)





FenceGard PowerDrive Claw Insulator

Use your Stockade, Milwaukee, or Dewalt Power Stapler to attach this insulator to wood posts using 2" staples. Fits high tensile smooth wire, Hotcote, and poly wire. Made in the USA.

Product Code: FGPDC (200 per box)

FenceGard Turtle Back Claw Insulator

The Turtle Back Claw Insulator is compatible with a variety of coated wire and ropes. This insulator is designed to fit both steel t-posts and wood fence posts.

White - 387 (25 per pack/10 packs per case)

White - 387B (100 per box)

Black - 388 (25 per pack/10 packs per case)

Black - 388B (100 per box)



Gallagher Super W Insulator

The Super W Insulator is compatible with a variety of coated wire and ropes. This product features a durable design and a large shield that prevents power loss through tracking.

White - G676144 (25 per bag/20 bags per case)

Black - G676044 (25 per bag/20 bags per case)



FenceGard Heavy Duty Claw Insulator

For use with Horsecote, Hotcote, poly rope, and high tensile wire.

Black - 142 (25 per bag/10 bags per case)

Black - 142B (100 per box)

White - 143 (25 per bag/10 bags per case)

White - 143B (100 per box)



FenceGard Wood Post Pinlock Insulator

The Wood Post Pinlock Insulator incorporates a pinlock for easy installation and removal of wires. This insulator has a wide "jaw" for added strength.

Product Code: 139 (25 per bag/10 bags per case)



FenceGard Wood Post Screw Insulator

The Wood Post Screw Insulator is a durable insulator that screws into the wooden fence post for a solid and secure hold. These insulators can be used with high tensile or poly wire.

Product Code: 204810 (25 per bag/28 bags per case)





Gallagher Multi-Purpose Pinlock Insulator

The Gallagher Multi-Purpose Pinlock Insulator can be used on t-posts or wooden fence posts. This insulator is compatible with a variety of coated wire and ropes.

Product Code: G681034 (20 per bag/20 bags per case)



FenceGard T-Post Tape Insulator

The T-Post Tape Insulator is easily installed on metal t-posts and can be used with poly tape up to 1 1/2" wide. Produced with UV resistant material for durability.

Product Code: 104042 (25 per pack/10 packs per case)



FenceGard T-Post Topper

The T-Post Topper is designed to fit onto a steel t-post, or nail onto the top of a wood post. This insulator can accommodate poly tape up to 1 1/2" wide, or poly rope up to 1/2" in diameter. The design of this insulator also helps in preventing animals from injuring themselves on t-post tops.

Product Code: 104044 (10 per pack/10 packs per case)



4" Spiral Fin Tube Insulator

The 4" Spiral Fin Tube Insulator is a unique insulator that can be snapped onto the wire after tensioning. A quick twist of the wrist snaps the Spiralarator onto the wire, which can then be slid into position. Spiralarators come in a plastic carry bucket and include 2" double barbed staples.

Product Code: 538 (100 per bucket)



Fin Tube Insulator

The 4" Fin Tube Insulator is contractor grade quality. It is manufactured with durable, non-conducting UV-stabilized polyethylene, and has fins that prevent slipping. Made in the USA.

Product Code: 539 (100 per bag/20 bags per case/32 cases per skid)

Product Code: 540 (200 per bag/10 bags per case/32 cases per skid)



Hotcote Tube Insulator

The 5" Hotcote Tube Insulator is manufactured with UV-stabilized polymer for durability.

These tube insulators are designed for use with Hotcote fence on line posts. Made in the USA.

White - JWHTW-4605 (100 per bag/20 bags per case)

Black - JWHTBK-4605 (100 per bag/20 bags per case)

Brown - JWHTBR-4605 (100 per bag/20 bags per case)



Hotcote Tubing

Hotcote Tubing can be used for insulators on Hotcote fence wire.

100' per roll. Made in the USA.

White - JWHTW-4610

Black - JWHTBK-4610

Brown - JWHTBR-4610



FenceGard Split Bolt Corner and End Strain Insulator

The Split Bolt Corner and End Strain Insulator allows for simple installation and tensioning of electric tape up to 2" wide. This product can also be used as an inside corner insulator.

Product Code - SBW6000 (2 per pack/12 packs per case)



FenceGard Poly Tape/Rope Insulator

This multi-purpose insulator can be installed on wood or PVC fence posts and accommodates poly tape up to 2" wide. This insulator can also be used with poly rope and poly wire up to 3/8" in diameter. Produced with UV resistant material for durability.

Product Code: TIW6001 (25 per pack/10 packs per case)



FenceGard Poly Tape/Rope Insulator

This multi-purpose insulator can be installed on wood or PVC fence posts and accommodates poly tape up to 2" wide. This insulator can also be used with poly rope and poly wire up to 1/2" in diameter. Produced with UV resistant material for durability.

Product Code: 104043 (25 per pack/10 packs per case)



FenceGard Corner Insulator

The Corner Insulator is a durable insulator that is manufactured with UV resistant polyethylene. These insulators are designed for use with high tensile wire, poly wire, or poly rope for any end or corner fencing application.

White - 104001 (10 per bag/40 bags per case)

Black - 104004 (10 per bag/40 bags per case)



Screw-In Corner Insulator

The Screw-In Corner Insulator easily screws into a wood fence post to insulate wire or poly wire fencing.

Product Code: 451 (10 per box/5 boxes per case)



Coated Wire Inside Corner Insulator

The Coated Wire Inside Corner Insulator easily screws into a wood corner post to attach Hotcote or Horsecote wire.

Product Code: JWICR



FenceGard Offset Pigtail

Drives into wood posts and holds electric wire 6" away from fence line.

Product Code: FG660214 (100 per box)

Wraparound Insulator



The Wraparound Insulator is used as a corner and end post insulator. A high density polyethylene insert within the insulator prevents wire from cutting through the insulator. Made in the USA.

20" Wraparound - 541 (10 per bag/10 bags per case)

20" Wraparound - 550 (100 per box)

24" Wraparound - 541-24 (10 per bag/10 bags per case)

24" Wraparound - 542 (100 per box)

Insultube



Insultube can be used for cutting custom length insulators and insulating underground electrical wire.

50' Insultube - INS-3605

100' Insultube - INS-3610

250' Insultube - INS-3625

Gallagher Insulated End Strainer



Heavy duty design to insulate and strain high tensile wire. White plastic body features a 10 year warranty with superior electric insulation design.

Product Code: G74313 (20 per case)



FenceGard Insulated Wire Strainer

This Donalds Type Strainer is designed with an aluminum cog, galvanized strap and spring, and can be tightened using a wrench. Features a White or Black insulator for electric high tensile wire applications.

White - 109323 (70 per case)

Black - 109324 (70 per case)

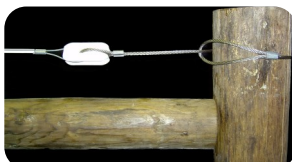


FenceGard EZ Combo End Strain & Strainer

Includes strainer with insulator and a 3/16" cable that fits posts up to 7" in diameter.

White - 385 (25 per case)

Black - 386 (25 per case)



FenceGard EZ End Strain

Includes insulator with a 3/16" cable that fits posts up to 7" in diameter.

White - 383 (25 per case)

Black - 384 (25 per case)



FenceGard 6-Strand Poly Wire (660')

FenceGard Poly Wire is a blend of UV resistant twine with 6 stainless steel wires. 660' roll.

Product Code: 88 (10 per case)



FenceGard 6-Strand Poly Wire (1650')

FenceGard Poly Wire is a blend of UV resistant twine with 6 stainless steel wires. 1650' roll.

Product Code: 87 (10 per case)



FenceGard 9-Strand Poly Wire (1320')

FenceGard Poly Wire is a blend of UV resistant twine with 9 stainless steel wires. 1320' roll.

Product Code: 89 (10 per case)



FenceGard Geared Reel

This reel is built with a galvanized frame and a 3:1 gear ratio. Capable of spooling 1,650' of poly wire or 660' of 1/2" poly tape.

Product Code: 104006 (4 per case)

Gallagher Geared Reel

The Gallagher Geared Reel is built with a fully galvanized frame with impact resistant materials. It features a 2.7:1 gear ratio and shatter proof lock that improves reel action during turning. Capable of spooling 1,650' of poly wire or 660' of 1/2" poly tape.

Product Code: G611504 (4 per case)

Gallagher Reel

The Gallagher Reel is built with a fully galvanized frame and impact resistant materials. Capable of spooling 1,650' of poly wire or 660' of 1/2" poly tape.

Product Code: G616004 (9 per case)



FenceGard 1/4" 9-Strand Poly Rope (660')

FenceGard Poly Rope is a blend of 1/4" diameter UV resistant twine with 9 stainless steel wires. 660' roll.

Product Code: 104 (6 per case)



FenceGard 1/2" White 6-Strand Poly Tape (660')

FenceGard Poly Tape is a woven blend of UV resistant fibers with 6 stainless steel wires. 660' roll.

Product Code: 92 (10 per case)



FenceGard 1-1/2" White 12-Strand Poly Tape (660')

FenceGard Poly Tape is a woven blend of UV resistant fibers with 12 stainless steel wires. 660' roll.

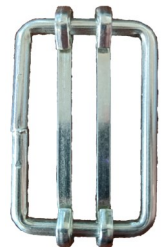
Product Code: 93 (6 per case)



FenceGard 1-1/2" Poly Tape Buckle

The Poly Tape Buckle joins sections of poly tape together without interrupting the flow of electricity.

Product Code: 30156 (4 per pack/18 packs per case)



FenceGard Rope Splice

The Rope Splice can be used for splicing together or terminating the ends of poly rope. This splice should be used with rope 1/4" - 5/16" in diameter.

Product Code: 30157 (8 per pack/10 packs per case)





FenceGard Spinning Jenny

The FenceGard Spinning Jenny has as an adjustable brake and is used for dispensing high tensile, Horsecote, and Hotcote wire. This spinning jenny features adjustable arms to fit a variety of coil sizes. Includes tripod.

Product Code: 301B



FenceGard Daisy Wheel Handle

The Daisy Wheel Handle is used to tighten in-line daisy wheel strainers. This tool is electroplated for durability.

Product Code: 103501 (10 per case)



FenceGard Chain Grab Wire Puller

The Chain Grab Wire Puller can be used to take the slack out of high tensile wire. This tool can also be used to easily splice fence wire.

Product Code: 781162 (4 per case)



Strainrite Chain Grab Wire Puller

This RX2 model features computer designed geometry, SG iron casting, smooth grip jaws, removable threaded handle, replaceable HT pivot bolt and standard tested chain.

Product Code: TCHR



Hayes Chain Grab Wire Puller

The Hayes Chain Grab Wire Puller is a contractor grade tool that has been proven in the field for over 100 years.

Product Code: H300



Ring Insulator Spinner

This drill attachment allows you to quickly screw a ring insulator into a wood post.

Product Code: 19302 (10 per case)



Stretcher Bar

The Stretcher Bar features hammer in wedges for easy operation.

This stretcher bar will work with most styles of woven wire. Wedges included.

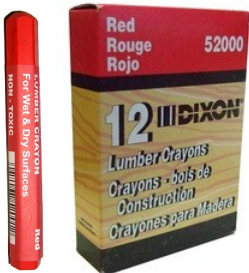
Product Code: KS50 - Up to 50" Tall Product Code: KS61 - Up to 61" Tall

Product Code: KS96 - Up to 96" Tall Product Code: 17019 - Replacement Wedges

Wedge



Marking Supplies



Lumber Crayons

These red lumber crayons last up to 10 times longer than ordinary wax crayons and are waterproof.

These crayons will work on wet or dry lumber.

**Product Code: 322R
(12 per box)**



Marking Paint

This fluorescent red orange marking paint is perfect for marking fence lines. Paint dries in less than 5 minutes and can be applied in temperatures as low as 25°F.

**Product Code: MPRO
(12 per case)**



Knipex Easy Cut Lever Action Center Cut Pliers

The Knipex Easy Cut Lever Action Center Cut Pliers has hardened cutting edges and a recessed blade for exceptional cutting performance.

Product Code: KN71318



FenceGard High Tensile Wire Cutter

The FenceGard High Tensile Wire Cutter is designed to cut high tensile wire. The tool measures 9" in length and comes with a safety handle lock.

Product Code: 145306 (5 per case)



Gripple Cutter

This Gripple Cutter has hardened jaws for durability and is spring loaded with a rubber coated handled. Cuts wire, rope, cable, twine, and bungee cord.

Product Code: 288593



Contractor Tensioning Tool

A contractor grade tool designed to work with all sizes of Gripples.

Product Code: 683532 (4 per case)



Gripple Tensioning Tool

The Gripple Tensioning Tool features a built in gearing system that will allow you to tension your fence with minimal effort. This handheld tool will work with all sizes of Gripples.

Product Code: 683533 (4 per case)



FenceGard Multi-Purpose Fence Tool

The Multi-Purpose Fence Tool is a 5-in-1 tool that is designed to splice, hammer, cut or grip wire, and remove staples.

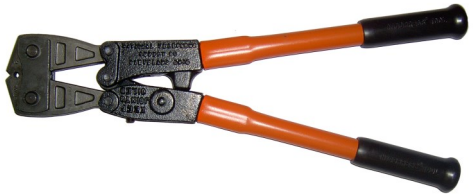
Product Code: 145296 (6 per case)



EZE Crimp Tool

The EZE Crimp Tool is lightweight and contractor grade quality. It can cut wire, strip cables, pull staples, and crimp 12.5 gauge sleeves. Made in New Zealand.

Product Code: H550



1-Slot Nicopress Crimping Tool

The 1-Slot Nicopress Crimping Tool is contractor grade quality and can crimp all 12.5 gauge style sleeves. Made in the USA.

Product Code: 323



4-Slot Nicopress Crimping Tool

The 4-Slot Nicopress Crimping Tool is contractor grade quality and can crimp all crimping sleeves carried by Keystone Fence Supplies. Made in the USA.

Product Code: 327



4-Slot FenceGard Crimping Tool

The 4-Slot Crimping Tool can crimp all crimping sleeves carried by Keystone Fence Supplies.

Product Code: 1101953 (5 per case)



FenceGard Strainer Handle

The Strainer Handle is designed to fit the most common brands of in-line wire strainers. This handle is electroplated for durability.

Product Code: 109303 (5 per case)



Pipe Tie Drill Chuck

Drill Chuck for 11 gauge Pipe Ties

Product Code: 658870



Wire Wrap Tool

The Wire Wrap Tool is used for bending wire in small spaces. This tool is ideal for wrapping ends on woven wire fence.

Product Code: WTT (2 per pack)



Staplemate Multi-Purpose Fencing Tool

This tool allows you to pull staples with ease and is perfectly balanced for one handed use. Hardened for extreme durability, the built in wire cutter also allows you to easily trim high tensile wire.

Product Code: A12506



Cordless Fence Stapler

Fire 600+ Staples Per Battery

Complete Kit Product Code: MIL-2843-22

Tool Only Product Code: MIL-2843-20



30 Degree Framing Nailer

Compatible with Grip-Rite Ring Shank Nails for Board Fence

Product Code: MIL-2745-20



14" Top Handle Saw

Top Handle Design with Extreme Power

Product Code: MIL-2826-20T



8" Hatchet Saw

Compact One Handed Design for Cutting Brace Rails

Product Code: MIL-3004-20



M18 FORGE Battery 6.0

Next Generation M18 Battery with HD 12.0 Power Output

Product Code: MIL-48-11-1861



ForceLogic Fence Crimp Kit

12.5ga High Tensile Wire Crimp Die, Case, 2 Batteries, Charger

Product Code: 2679-22K



Milwaukee Barbed Staples

960 ZA Coated Staples Per Box

1.5" Staple Product Code: MIL-MPU112-960

1.75" Staple Product Code: MIL-MPU134-960

2" Staple Product Code: MIL-MPU2-960



Switch Tank Backpack Sprayer

Powered Switchable Tank for Fence Stain or Weed Spray

Product Code: MIL-2820-20PS



2" K+Barb Power Staple

Product Code: FG2KBPS

INCREASED SAVINGS AND 66% MORE HOLDING POWER

WHEN FIELD TESTED AGAINST 1.75" BARBED STAPLES



FEATURES:

- Class 4 Galvanized (More Zinc than Class 3)
- 2" Length (Increased Depth of Hold)
- Knurling + Barbed Hybrid Design
- 9 Gauge Material (Compatible with Most Tools)
- Works with FenceGard Power Drive Enhanced Rail

KNURLED STAPLES PROVIDE LAB PROVEN INCREASED HOLDING POWER WHEN COMPARED TO BARBED STAPLES.

THIS HYBRID K+BARB DESIGN OFFERS TRADITIONAL HOLDING POWER OF BARBED STAPLES WITH THE ENHANCED CAPABILITY OF KNURLING DESIGNED FOR MORE SURFACE AREA ON WOOD FIBERS.

PowerDrive Rail

Milwaukee: FGPDER

Dewalt: FGDWR





Professional Strength Wire

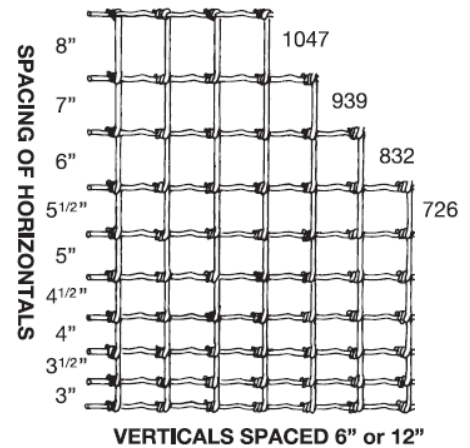
Made in America Bekaert fence products set the bar for **quality and durability**. When you buy Bekaert wire, you buy the industry leader in manufacturing and erosion-controlling coatings. Designed for the professional fence installer, farmer or rancher, these fences are the **strongest you can buy in the market**.

How To Read Bekaert Fence Design Numbers

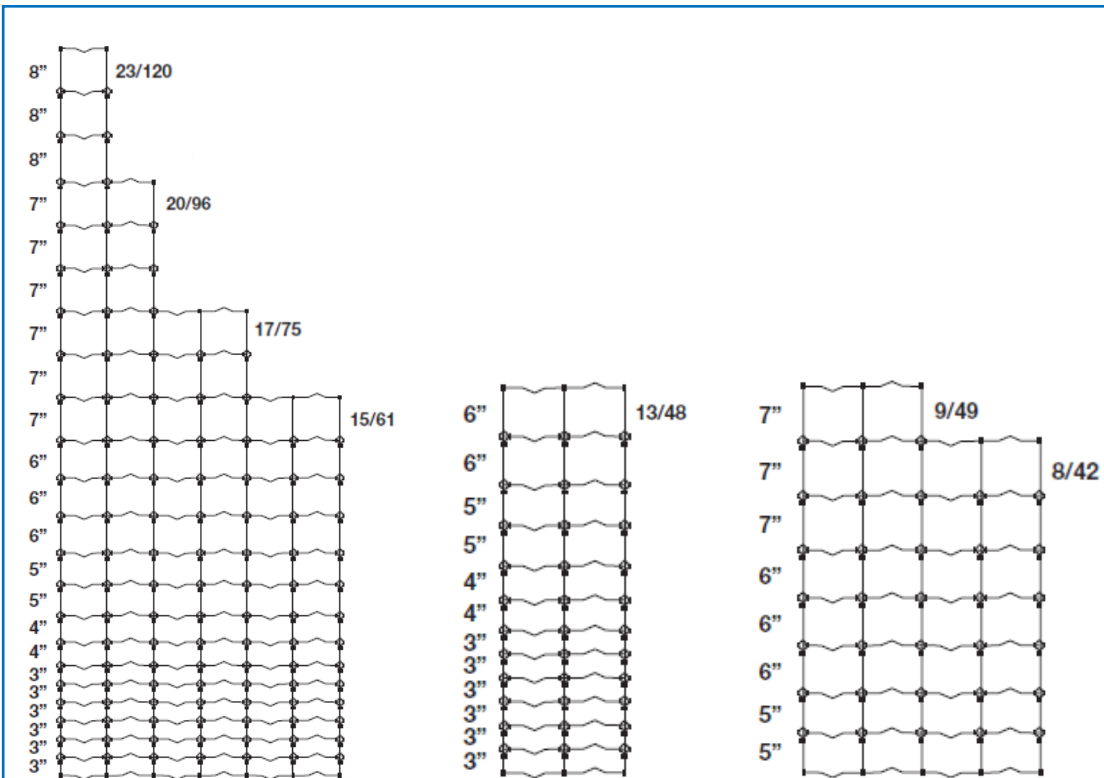
Woven wire is available in a variety of configurations. Understanding the product description will help you select the right fence for your job.

1047-6 12.5g 330' Class 3

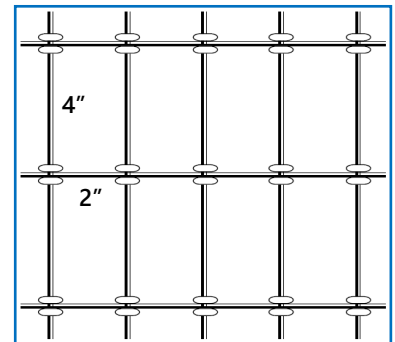
- 10 = number of line wires
- 47 = height of fence in inches
- 6 = stay wire spacing in inches
- 12.5g = diameter of wire
- 330' = length of fence
- Class 3 = weight of galvanization



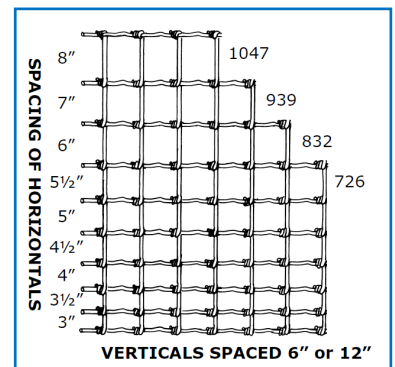
Solidlock Pro Fixed Knot Diagram



Horseman Non-Climb Fence Diagram



Gaucha Field Fence Diagram

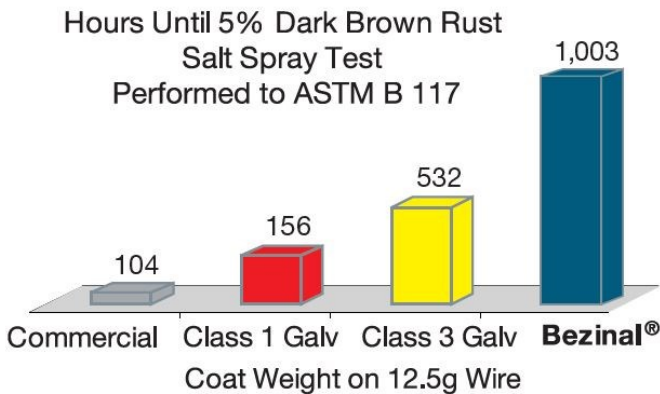


Superior Coating Technology

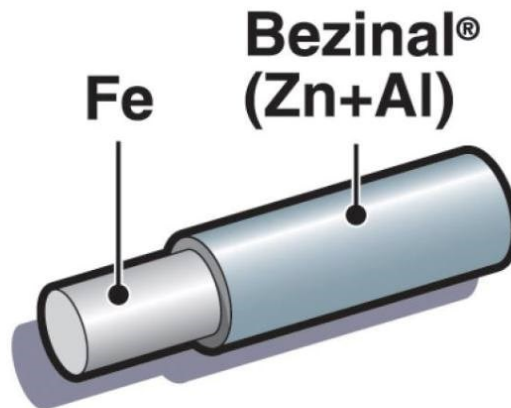
Initially developed for the telecom industry in the 1990's due to demand for a longer lasting coating. Bekaert Bezinal® Coating stands up better than any other coating, including Class 3 Galvanized. You never have to be concerned on how Bezinal Coating will perform. Bezinal will outperform Class 3 galvanization in all areas where coating is important:

- ✓ More Corrosion Resistant
- ✓ Better Self-Healing
- ✓ Higher Resistance to Chipping and Flaking
- ✓ Maintains Appearance

In other words, it last longer, looks better, and is more cost effective (less money per foot of wire).



Features	Benefits
• Solid vertical stay wires	Locks together line and stay wires for maximum strength.
• Bezinal® coating	Superior corrosion resistance (2x better than class 3 galvanized wire)
• High tensile steel wires	Maximum strength Reduced sagging and elongation Easier installation Increased post spacing Lower maintenance



STAYS STRONGER, LASTS LONGER, AND RESISTS RUST 2X BETTER THAN CLASS 3 GALVANIZED WIRE

OUTPERFORMS IN ALL AREAS

Pasture Fencing

Manure Intensive Lots

Heavily Salted Road Side Fencing

Within 100 Miles of Coastal Regions

Solidlock & Tightlock Pro 30 Fixed Knot



Solidlock Pro 30 Fixed Knot/42" Height/3" Stays/200' Length
12.5 Gauge HT/Bezinal Coated - 280717 (6 rolls per skid)



Solidlock Pro 30 Fixed Knot/42" Height/6" Stays/330' Length
12.5 Gauge HT/Bezinal Coated - 180682 (6 rolls per skid)



Solidlock Pro 30 Fixed Knot/48" Height/3" Stays/200' Length
12.5 Gauge HT/Bezinal Coated - 278735 (6 rolls per skid)



Tightlock Pro 30 Fixed Knot/48" Height/3" Stays/330' Length
12.5 Gauge HT/Bezinal Coated - 706760 (4 rolls per skid)



Solidlock Pro 30 Fixed Knot/48" Height/6" Stays/330' Length
12.5 Gauge HT/Bezinal Coated - 221285 (6 rolls per skid)



Tightlock Pro 30 Fixed Knot/48" Height/6" Stays/660' Length
12.5 Gauge HT/Bezinal Coated - 706822 (4 rolls per skid)



Solidlock Pro 30 Fixed Knot/49" Height/6" Stays/330' Length
12.5 Gauge HT/Bezinal Coated - 180541 (6 rolls per skid)



Tightlock Pro 30 Fixed Knot/49" Height/6" Stays/660' Length
12.5 Gauge HT/Bezinal Coated - 706823 (4 rolls per skid)



Solidlock Pro 30 Fixed Knot/61" Height/3" Stays/200' Length
12.5 Gauge HT/Bezinal Coated - 278737 (6 rolls per skid)



Solidlock Pro 30 Fixed Knot/61" Height/6" Stays/330' Length
12.5 Gauge HT/Bezinal Coated - 278983 (6 rolls per skid)



Solidlock Pro 30 Fixed Knot/75" Height/6" Stays/330' Length
12.5 Gauge HT/Bezinal Coated - 278743 (6 rolls per skid)



Solidlock Pro 30 Fixed Knot/84" Height/6" Stays/330' Length
12.5 Gauge HT/Bezinal Coated - 656445 (6 rolls per skid)



Solidlock Pro 30 Fixed Knot/96" Height/3" Stays/165' Length
12.5 Gauge HT/Bezinal Coated - 278696 (6 rolls per skid)



Solidlock Pro 30 Fixed Knot/96" Height/6" Stays/330' Length
12.5 Gauge HT/Bezinal Coated - 180546 (6 rolls per skid)



Tightlock Pro 30 Fixed Knot/96" Height/6" Stays/660' Length
12.5 Gauge HT/Bezinal Coated - 706830 (4 rolls per skid)



Solidlock Pro 30 Fixed Knot/96" Height/12" Stays/330' Length
12.5 Gauge HT/Bezinal Coated - 181413 (6 rolls per skid)



RECOMMENDED FOR THE JOB

OK FOR THE JOB

NOT RECOMMENDED FOR THE JOB

Horseman High Tensile Non-Climb Horse Fence



Horseman 30 Non-Climb Horse Fence/2" x 4" x 48"/330' Length/13.5 Gauge Stay
12.5 Gauge Line Wire/Bezinal Coated - 287167 (4 rolls per skid)



Horseman 30 Non-Climb Horse Fence/2" x 4" x 60"/200' Length/13.5 Gauge Stay
12.5 Gauge Line Wire/Bezinal Coated - 164399 (6 rolls per skid)



Horseman 30 Non-Climb Horse Fence/2" x 4" x 72"/100' Length/13.5 Gauge Stay
12.5 Gauge Line Wire/Bezinal Coated - 165031 (11 rolls per skid)



Horseman 40 Non-Climb Horse Fence/Black/2" x 4" x 48"/330' Length/13.5 Gauge Stay
12.5 Gauge Line Wire/Bezinal+Paint Coated - 710386 (4 rolls per skid)



Horseman 40 Non-Climb Horse Fence/Black/2" x 4" x 60"/200' Length/13.5 Gauge Stay
12.5 Gauge Line Wire/Bezinal+Paint Coated - 234666 (4 rolls per skid)



High Tensile Sheep & Goat Fence



Sheep & Goat 30 4" x 4" x 48"/330' Length/13.5 Gauge Stay/12.5 Gauge Line Wire
Bezinal Coated - 213412 (8 rolls per skid)



GaUCHO Field Fence



GaUCHO 20 Field Fence/32" Height/6" Stays/330' Length
14 Gauge HT/Class 3 Galvanized - 118406 (11 rolls per skid)



GaUCHO Pro 20 Field Fence/47" Height/6" Stays/330' Length
12.5 Gauge HT/Class 3 Galvanized - 118202 (8 rolls per skid)



Cattleman Barbed Wire



Cattleman Pro 30 Barbed Wire/4 points every 5 inches/1320' Length
14 Gauge HT/Bezinal Coated - 145734 (27 rolls per skid)



Solidlock Pro 40 Fixed Knot



Solidlock Pro 40 Fixed Knot/Black/48" Height/3" Stays/200' Length
12.5 Gauge HT/Bezinal+Paint Coated - 170272 (6 rolls per skid)



Solidlock Pro 30 Fixed Knot/Black/48" Height/6" Stays/330' Length
12.5 Gauge HT/Bezinal+Paint Coated - 252885 (6 rolls per skid)



Solidlock Pro 40 Fixed Knot/Black/75" Height/6" Stays/330' Length
12.5 Gauge HT/Bezinal+Paint Coated - 134720 (6 rolls per skid)



Solidlock Pro 40 Fixed Knot/Black/96" Height/6" Stays/330' Length
12.5 Gauge HT/Bezinal+Paint Coated - 136261 (6 rolls per skid)



RECOMMENDED FOR THE JOB

OK FOR THE JOB

NOT RECOMMENDED FOR THE JOB



High Tensile Smooth Wire

2,000 ft. Roll Class 3 Galvanized @ 170,000 PSI
Product Code: 118358 (40 rolls per skid)



2,000 ft. Roll Beznal Coated @ 200,000 PSI
Product Code: 602638 (40 rolls per skid)

4,000 ft. Roll Beznal Coated @ 200,000 PSI Torsion Free
Product Code: 179484 (20 rolls per skid)

4,000 ft. Roll Beznal+Paint Coated (Black) @ 180,000 PSI
Product Code: 139881 (20 rolls per skid)



Brace Wire

Brace Wire is 9 gauge and is Class 3 Galvanized for durability.
 This Bekaert wire is great for fence brace applications. Approx. 170' per roll.

Product Code: 223896 (20 rolls per pack)



FenceGard PVC Coated Wire

This FenceGard PVC Coated Wire is 14 gauge 2x4 welded wire with a durable vinyl coating. 100' per roll.

Black

2" x 4" x 36" - W2436B (9 rolls per skid)

2" x 4" x 48" - W2448B (9 rolls per skid)

Green

2" x 4" x 36" - W2436G (9 rolls per skid)

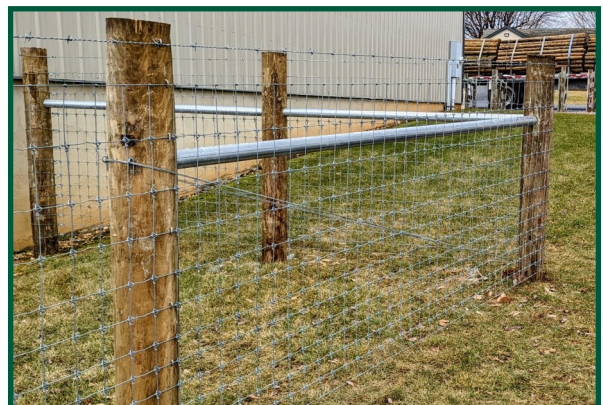
2" x 4" x 48" - W2448G (9 rolls per skid)

Heavy Duty Brace Pipe

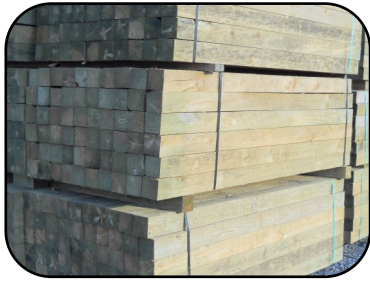
2 3/8" OD 12 Gauge Cold Rolled G90 Galvanized 10' Pipe
 61 per bundle. Also Available in Black Powder Coat.

Galvanized - 12GP10G

Black Powder Coat - 12GP10B



Square Posts



P447



P467



LP44



LP6



MCA Treated Square Posts

- 4" x 4" x 7' - P447 (bundle size varies)
- 4" x 4" x 8' - P448 (bundle size varies)
- 3" x 6" x 7' - P367 (56 per bundle)
- 3" x 6" x 8' - P368 (56 per bundle)
- 4" x 6" x 7' - P467 (42 per bundle)
- 4" x 6" x 8' - P468 (42 per bundle)
- 5" x 5" x 8' - P558 (40 per bundle)
- 6" x 6" x 8' - P668 (S4S Cut) (28 per bundle)

Square Locust Posts

Rough Cut for Rustic Appearance.

- 4" x 4" x 7' - LP447 (60 per bundle)
- 4" x 4" x 8' - LP448 (60 per bundle)
- 6" x 6" x 8' - LP668 (28 per bundle)

Q8 Log Oil

AWPA Approved for End Cuts.

- CLEAR 1 Gallon Jug - Q8
- CLEAR 5 Gallon Tote - CTAQ8CL5G

Temporary Fence Posts



Painted T-Post 6'

The Painted T-Post (1.25lb) is studded and has a plate for driving stability and post alignment. These posts are painted green with white tops. Includes 5 clips per post.

Product Code: TP6 (200 per skid)



FenceGard Tread In Post

The Tread In Post is a portable fence post that is made with heavy duty UV-stabilized polymer. The post is designed with eight holders for poly wire and a holder for poly tape. Each post is 42" tall.

Product Code: 492400 (50 per box)



FenceGard Pig Tail Step In Post 41"

The Pig Tail Step In Post is a portable fence post that features a UV resistant coating for insulation and 5/16" spring steel rod.

Product Code: 492405 (50 per box)



Gallagher Ring Top Post

Ring Top Post is built tough with a head that will not wear through, a super strong foot plate that will not bend under pressure and a sleek design that significantly reduces tangling. Each post is 33" tall.

Product Code: G72315 (50 per box)

Split Rail & Slip Board Posts

CCA Treated Split Rail Posts

Appalachian Style

2 Hole 3.5" x 6" x 7' - HSR2 (60 per bundle)

3 Hole 3.5" x 6" x 7' - HSR3 (60 per bundle)

4 Hole 3.5" x 6" x 8' - HSR4 (60 per bundle)

Corner Posts

3 Hole 6-7" x 8' - CSR3HD (35 per bundle)

4 Hole 6-7" x 8' - CSR4 (35 per bundle)

End Posts

3 Hole 6-7" x 8' - ESR3HD (35 per bundle)

4 Hole 6-7" x 8' - ESR4 (35 per bundle)

MCA Treated Split Rail Posts

Corner Posts

2 Hole 4" x 4" x 7' - CSR2 (30 per bundle)

3 Hole 4" x 4" x 7' - CSR3 (30 per bundle)

End Posts

2 Hole 4" x 4" x 7' - ESR2 (30 per bundle)

3 Hole 4" x 4" x 7' - ESR3 (30 per bundle)

MCA Treated Slip Board Posts

Line Posts

3 Hole 3" x 6" x 7' - PSB3367 (49 per bundle)

3 Hole 3" x 6" x 8' - PSB3368 (49 per bundle)

3 Hole 4" x 6" x 7' - PSB3467 (42 per bundle)

3 Hole 4" x 6" x 8' - PSB3468 (42 per bundle)

4 Hole 3" x 6" x 8' - PSB4368 (49 per bundle)

4 Hole 4" x 6" x 8' - PSB4468 (42 per bundle)

Corner Posts

3 Hole 6" x 6" x 8' - CSB3 (S4S Cut) (32 per bundle)

4 Hole 6" x 6" x 8' - CSB4 (S4S Cut) (32 per bundle)

End Posts

3 Hole 6" x 6" x 8' - ESB3 (S4S Cut) (32 per bundle)

4 Hole 6" x 6" x 8' - ESB4 (S4S Cut) (32 per bundle)

Locust Split Rail Posts

Line Posts

2 Hole 3" x 6" x 6' - LP2 (50 per bundle)

3 Hole 3" x 6" x 7' - LP3 (50 per bundle)

Corner Posts

2 Hole 4" x 4" x 7' - CP2 (30 per bundle)

3 Hole 4" x 4" x 7' - CP3 (30 per bundle)

End Posts

2 Hole 4" x 4" x 7' - EP2 (30 per bundle)

3 Hole 4" x 4" x 7' - EP3 (30 per bundle)

HSR3



CSR3



CSR3HD



ESR3



ESR3HD



PSB3367



PSB3467



CSB3



ESB3



LP3



CP3



EP3



Boards & Rails



BH1616



B01610



BP1610

Boards

Untreated Hemlock

1 1/4" x 6" x 16' - BH1616

(105 per bundle)

Untreated Oak

1" x 6" x 10' - B01610

(140 per bundle)

1 1/8" x 6" x 16' - B01616

(105 per bundle)

MCA Treated Pine

1" x 6" x 10' - BP1610

(140 per bundle)

1 1/4" x 6" x 16' - BP125616

(105 per bundle)

MCA Treated Poplar

1 1/8" x 6" x 16' - BPOP1616

(105 per bundle)

Rails

Untreated Hemlock

11' Split Rail - HSR11

(100 per bundle)

11' Diamond Rail - DHSR11

(99 per bundle)

(Bundle Contains Mixed Faced and Diamond Rails)

ACQ Treated Poplar

11' Poplar Split Rail - SR11

(100 per bundle)

CCA Treated Poplar

11' HD Poplar Split Rail - SR11HD (100 per bundle)



HSR11



SR11

White Cedar Posts



CP67



CP612

White Cedar Posts

Non-Treated. Suitable for Organic Applications.

5-6" x 7' - CP67

(63 per bundle)

5-6" x 8' - CP68

(63 per bundle)

5-6" x 12' - CP612

(63 per bundle)

Wood & Posts



WOOD TREATED RIGHT

We want to provide you with the highest quality agricultural fence posts available! We are able to control quality by manufacturing our own fence posts, letting them air season properly, and then pressure treating them at our own wood preserving facility.

Our Keystone Fence Supplies Wood Preserving Plant has a strong commitment to its people, to the environment, and to the community in which we operate. We treat in accordance with AWPA standards and have high standards for quality control.

Our CCA treated wood is clean, odorless, safe to work with, and non-irritating to humans, animals, and the environment.

.40 PCF CCA Treated Pointed Posts

PP348



CCA Treated Pointed Posts

3-4" x 8' - PP348

(90 per bundle)

.40 PCF CCA Treated Half Round Posts

HR678



CCA Treated Half Round Posts

6-7" x 7' - HR677

(70 per bundle)

6-7" x 8' - HR678

(70 per bundle)

.40 PCF CCA Treated Faced Posts

PF678



CCA Treated Faced Posts

6-7" x 7' - PF677

(35 per bundle)

6-7" x 8' - PF678

(35 per bundle)

.40 PCF CCA Treated Non-Tapered Posts



P58



P68

CCA Treated Non-Tapered Posts

5" x 7'	- P57	(45 per bundle)
5" x 8'	- P58	(45 per bundle)
5" x 10'	- P510	(45 per bundle)
6" x 7'	- P67	(30 per bundle)
6" x 8'	- P68	(30 per bundle)

.40 PCF CCA Treated Round Posts



P3547



P457



P5665



P567



P677



P5612

CCA Treated Round Posts

3-4" x 8'	- P348	(90 per bundle)
3-4" x 10'	- P3410	(80 per bundle)
3.5-4" x 7'	- P3547	(90 per bundle)
4-5" x 6.5'	- P4565	(60 per bundle)
4-5" x 7'	- P457	(60 per bundle)
4-5" x 8'	- P458	(60 per bundle)
4-5" x 10'	- P4510	(60 per bundle)
4-5" x 12'	- P4512	(50 per bundle)
4-5" x 14'	- P4514	(50 per bundle)
5-6" x 6.5'	- P5665	(45 per bundle)
5-6" x 7'	- P567	(45 per bundle)
5-6" x 8'	- P568	(45 per bundle)
5-6" x 10'	- P5610	(40 per bundle)
5-6" x 12'	- P5612	(35 per bundle)
5-6" x 14'	- P5614	(35 per bundle)
6-7" x 7'	- P677	(35 per bundle)
6-7" x 8'	- P678	(35 per bundle)
6-7" x 10'	- P6710	(35 per bundle)
6-7" x 12'	- P6712	(30 per bundle)
6-7" x 14'	- P6714	(30 per bundle)
7-8" x 8'	- P788	(25 per bundle)
7-8" x 10'	- P7810	(20 per bundle)

.60 PCF CCA Treated Poles



CCA Treated Poles

6-7" x 20'	- P6720	(8 per bundle)
6-7" x 25'	- P6725	(8 per bundle)
6-7" x 30'	- P6730	(8 per bundle)

Wood Defender[®]

FENCE & EXTERIOR STAINS

PROFESSIONAL WOOD STAIN FOR EVERY PROJECT

Unique, oil-based exterior wood stain formulated to provide a strong mold, mildew, and algae-resistant finish all while protecting and enhancing wood's natural beauty through all seasons.

- Uniform application
- Superior color retention
- Waterproof formula
- Extreme climate formula
- Mildew-resistant



EASY TO APPLY



EASY TO CLEAN



LONG-LASTING



THE RIGHT STAIN FOR YOUR PROJECT



IN STOCK AT KEYSTONE FENCE SUPPLY CO

Additional Stain Colors Available for Special Order

5 Gal. **BLACK SEMI-TRANSPARENT FENCE STAIN**
Product Code: 808482-5

5 Gal. **COFFEE BROWN SEMI-TRANSPARENT FENCE STAIN**
Product Code: 808410-5

5 Gal. **SABLE BROWN SEMI-TRANSPARENT FENCE STAIN**
Product Code: 808409-5

5 Gal. **CHARCOAL GRAY SEMI-TRANSPARENT FENCE STAIN**
Product Code: 808480-5

5 Gal. **MESA GRAY SEMI-TRANSPARENT FENCE STAIN**
Product Code: 808415-5

5 Gal. **BARN RED SEMI-TRANSPARENT FENCE STAIN**
Product Code: 808414-5

5 Gal. **LEATHERWOOD TRANSPARENT FENCE STAIN**
Product Code: 809503-5

5 Gal. **CLEAR GLOW TRANSPARENT FENCE STAIN**
Product Code: 809509-5

Office: (717) 949-8170

ESTIMATED COVERAGE

5 gallons will stain approximately 120' of 3 Board Fence
5 gallons will stain approximately 100' of 4 Board Fence

Estimates are for new installations using Semi-Transparent Fence Stain.

Add 10% more stain for aged lumber.

Add 20% more stain if using Transparent Fence Stain.

Estimates based on 5' tall fence to compensate for posts, face boards, etc.

**CONTRACTOR'S
CHOICE**

Our unique oil-based formula doesn't just sit on the surface like paint. Stain penetrates wood to protect it from water, mildew, and sun damage. It covers in a single coat, with no runs, drips, or back-brushing to create long-lasting beauty with years of protection!

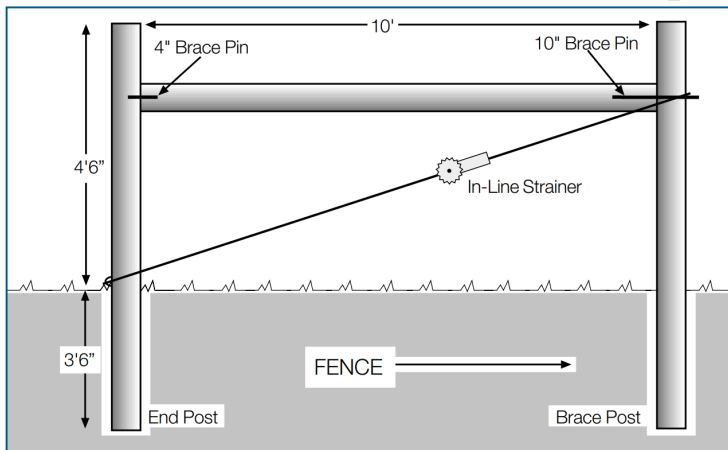
PROFESSIONAL WOOD STAIN FOR EVERY PROJECT

Your deck or fence deserves superior wood stain.

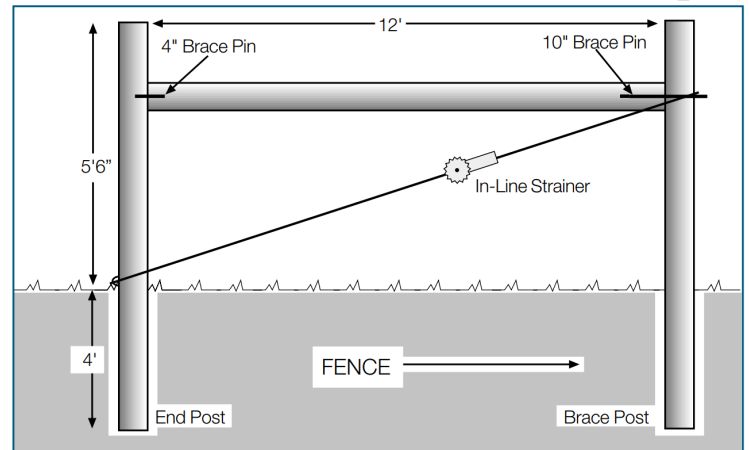
Wood Defender™ goes on easy and covers in one coat, with no back-brushing.



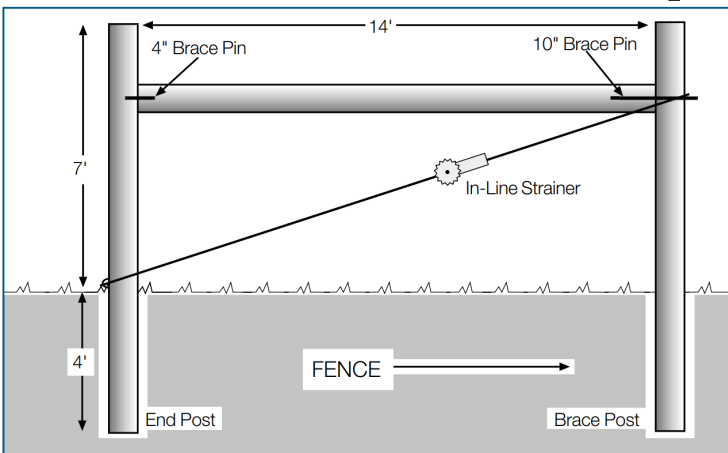
4' Fixed Knot Brace Assembly



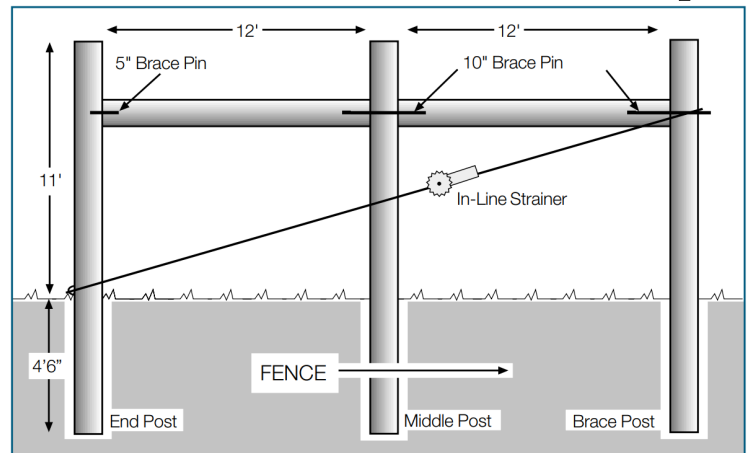
5' Fixed Knot Brace Assembly



6' Fixed Knot Brace Assembly



8' Fixed Knot Brace Assembly



Installation

1. Drive or auger and tamp the End Post.
2. Pull the Guide Wire.
3. Set the Brace Posts using the Cross Member for measurement and aligning to the Guide Wire.
4. To establish the location of the Cross Member, measure the distance from the bottom of the fabric to a point midway between the 2nd and 3rd wire from the top. Using this measurement mark the inside of the Brace Posts.
5. Drill a ½" by 2" hole in the End Post and drill a ½" hole through the Brace Post. Set the 4" Brace Pin in the End Post and start the 10" pin in the Brace Post.
6. Pilot drill the ends of the Cross Member. Set one end of the Cross Member on the 4" pin, and then lift the other end to align with the 10" pin. Drive the 10" pin into the Brace Post, leaving 1" exposed for the installation of the Brace Wire.
7. Drive a barbed staple partially in (approximately 3 to 4 inches above ground level) on the side of the End Post opposite the Cross Member.
8. Guide the Brace Wire through the staple in the end post, up over the 10' pin in the Brace Post, back down and through the staple and over the 10" pin again. This will provide a double wrap for the Brace Wire.
9. Install a ratchet type wire strainer on the Brace Wire. Install the ratchet on the opposite side of the Brace that the wire fabric will be on. Tighten the Brace Wire. Gripple BeFAST Brace Kits or wire links can also be used to build your brace.

NOTE: Braces must be installed in the fence line, regardless of the length of the pull. Brace should be a minimum of 2 times the height of the fence (2.5 times is preferred). Never cut into treated posts, cutting into the wood will expose untreated wood to the elements.



End Posts and Guide Wire

To begin construction, locate and set the end and corner posts. Use treated posts of no less than 6" in diameter or 3 1/2" pipe, set 4' to 6' deep. The depth of setting depends on soil types; rocky soils set 4' and sandy soils 6'. After setting posts, use a guide wire of 12 1/2 ga. High Tensile wire pulled tight between posts. This wire becomes the fence line.

Bracing

Braces are the backbone of any fence and must be built correctly. Braces may be single or double, with the minimum width being two times the height of the fence. Cross members should be pipe, tubing, or round wood posts. Double wraps of 12 1/2 ga. High Tensile or 9 ga. low-tensile wire make the twitch wire. Gripple BeFAST kits can also be used to build your brace. Twitch wire MUST be anchored securely or the brace will fail.

Dips & Humps

Generally, the use of 20' post centers is adequate for High Tensile fencing, however this is only a guideline. A rigid post should be placed at the lowest point of a dip and at the crown of a hump. These posts should be larger than the line posts and set a little deeper. They will hold the fence up or down as required. Standing on the guide wire in dips will show you where to put the rigid post.



Tying Off

Generally, High Tensile wire is tied off at both ends of the fence and is tensioned to the middle of the pull. This allows the fence to be tied off without being under tension. Use a High Tensile slip knot to tie off the wire. Keep the vertical wire straight so the wire will tension the same throughout the fence. Gripple T-Clips can also be used to terminate wires at the end of your fence.

Splicing

Splicing can be done several ways; including hand tying knots, Gritted Crimp Sleeves, or Gripple Connectors. Be sure to use a calibrated crimp tool for best holding power.

Tensioning

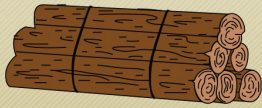
Stretcher bars are useful for joining and tensioning wire. A Keystone Wire Dispenser can also be used to dispense and tension your woven wire fence. Be sure not to over tension your wire or you will damage it! When tensioning, pull out half the depth of the tension curve in the wire.

Trimming Out

Position the wire 1-2" off of the ground and staple to the post. Use barbed staples and leave room for the wire to move freely under the staple. Do not hard staple! Staple all high points first, and then pull the wire down and staple it last. If there are a lot of dips, a little less tension would be applied as pulling the wire down will tighten the wire more.



Keystone Fence



SUPPLY CO



QUALITY

FENCE POSTS

THAT MAKE THE DIFFERENCE

***BUILD YOUR REPUTATION WITH
PREMIUM SOUTHERN YELLOW PINE POSTS
TRUSTED, RELIABLE, TREATED RIGHT***



Office: (717) 949-8170

Email: sales@keystonefencesupplies.com

Website: www.keystonefencesupplyco.com

PO Box 268 - 280 North Locust Street - Schaefferstown, PA 17088